

AS4758 & ISO12402-3



**Stormy Jacket – ISJ 150N**

- 33gm CO<sub>2</sub> Cylinder
- Water Activation System – will inflate Automatically in an overboard emergency
- Blanking cap for Manual option (pull down pocket)
- Zip off sleeves
- Lined hood with peak stored in collar
- Waterproof/Windproof outer / Storm flap
- Lifting Loop (to aid rescue)
- XS to 3XL – Larger sizes on application

AS4758 & ISO12402-3



**Stormy Vest – ISV 150N**

- 33gm CO<sub>2</sub> Cylinder
- Water activation System – will inflate Automatically in an overboard emergency
- Blanking cap for Manual option (pull down pocket)
- Waterproof/Windproof outer
- Lifting Loop (to aid rescue)
- XS to 3XL – Larger sizes on application

AS4758 & ISO12402-3



**Premium Yoke – ISY 150N**

- 38gm CO<sub>2</sub> Cylinder
- Water Activated System – will inflate Automatically in an overboard emergency
- Blanking cap for Manual operation as an option
- Chest Size Range: 55cm to 140cm & 40kg +
- Leg strap with Quick release buckle
- Lifting Loop
- Quick release front buckle
- Velcro closure cover
- Padded fleece collar (removable)
- Mesh cape back (for greater comfort)

AS4758



**Stormy Lite Vest – SKV 100N**

- 25gm CO<sub>2</sub> – Manual Pull cord Inflation
- Lightweight vest with mesh liner
- Double leg straps and internal belt
- Handy, secure, utility pockets for Extras
- Size Range: XS to 3XL

*A great solution for Kayaking or boating in warm weather.*



**Stormy Waist Pants – SWWP**

- Water and Windproof outer
- Lightweight
- Elasticised waist
- Seam sealed
- Adjustable ankle tabs
- Colour: Red
- Sizes: S to 3XL



**Stormy Bib & Brace Pants – SBP**

- Overall style
- Lightweight/ Waterproof
- Hard Wearing
- Reinforced knees and seat
- Wide leg with adjustable ankle straps
- Adjustable waist tabs
- Size Range: XS to 2XL (will fit 3XL)

AS4758 & ISO12402-3



**Pro Sailing Yoke – ISYH 150N**

- 38gm CO<sub>2</sub> Cylinder – Automatic Inflation
- ISO 12401 Deck Safety Harness
- Double 'D' rings for ideal weight distribution
- Built in, easy don, ISO 12402-8 Spray hood
- Double leg straps with quick release buckles
- SOLAS approved Water Activated Lifejacket Light

*ISO 12402-8 Spray Hood*

**Stormy Sailing Vest – ISVH 150N**

*All features of the ISV plus :*

- ISO 12401 Safety Deck Harness • Double Leg straps

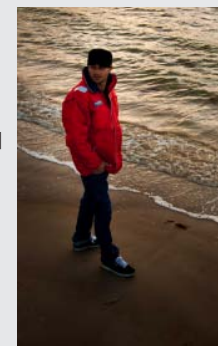
**Stormy Sailing Jacket – ISJH 150N**

*All features of the ISJ plus :*

- ISO 12401 Safety Deck Harness • Double Leg straps

*Sailing Vest and Jacket Options:*

- Water-activated Lifejacket Light
- Spray hood ISO 12402-3



*New and better ways to stay safe!*

Innovation is a great business tradition at STORMY.  
Talented people – emergent Technologies and Research and Development.

*This is where it all comes together!*

# STORMY

**Inflatable PFD Technologies**

[www.stormyaustralia.com](http://www.stormyaustralia.com)

## Instructions for use



### Automatic Inflation

The jacket will inflate within 5 seconds after immersion



**To inflate Manually**  
Pull pocket down firmly



### To Inflate Orally

Remove black cap and blow into red oral tube



**To Deflate**  
Invert the black cap and press into top of oral tube while gently pressing on air chamber

### REPLACE THE CO<sub>2</sub> CYLINDER AFTER INFLATION.

Service every 12 months for Commercial use  
Service every 24 months for Recreational use

## STORMY AUSTRALIA

33 Electra Place, Mornington  
Tasmania 7018 Australia  
Ph: 03 6245 0443 Fax: 03 6245 0556  
[www.stormyaustralia.com](http://www.stormyaustralia.com)

May, 2011

*Saving lives since 1993*

- Helen Moore



**AS4758**